

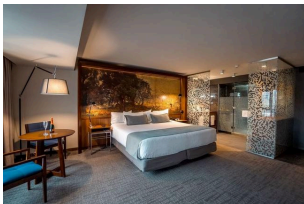
# PATAGONIA - JOURNEY TO THE END OF THE WORLD



## Day 1

### Arrive Santiago, Chile

O'Nite: [Hotel Cumbres Lastarria](#)



[Santiago de Chile](#)

[Barrio Lastarria](#)

Arrive into Santiago today, crossing the International Dateline en route. Upon arrival into Santiago International Airport, you will be welcomed outside of Customs by an English-speaking assistant holding a sign with your name on it. This representative will direct you to your awaiting vehicle and driver, and accompany you to your hotel, located in Lastarria suburb and will assist with check-in. Balance of the day at leisure.

Lastarria is a trendy and bohemian neighborhood located in the heart of Santiago de Chile. This picturesque neighborhood is situated between Parque Forestal and Cerro Santa Lucía, two of Santiago's most popular parks. Lastarria is known for its vibrant street art, colorful buildings, and lively atmosphere. The streets are lined with trendy cafes, boutique shops, and stylish restaurants serving up traditional Chilean cuisine, making it a popular destination for foodies and culture enthusiasts alike.

## Day 2

### Explore Santiago, Chile



#### **Suggested Restaurant:** [Bocanariz](#):

With 300 kinds of wine on hand for any given evening, many of which can be drunk by the glass or small pour. The menu is set up for pairing, separating out food types by notes such as smoky, spiced, citrus, light, creamy, herbed, and sweet. There are also themed flights of wine, including one called huaso for the Chilean cowboy. (not included)



Santiago de Chile was founded in 1541 by the Spanish Conquistador Pedro de Valdivia, who was sent by the conqueror of the Incas, Pizarro, to establish a new capital in the fast-growing Spanish Empire in the New World. Much of the core layout as designed by the master builder Pedro de Gamboa remains to this day. During the half day city tour, you will visit key locations where the rich history of the city played out.

The tour starts with a visit to "Forestal Park", which runs along Mapocho River - water that penetrates the land. The river itself flows from the Andes and cuts the city of Santiago in two. It is then onto Santa Lucia Hill, the actual spot on where the city was founded. A geographical high point of the area, the hill is now adorned with wonderful facades, fountains and stairways, including "Neptuno Terrace" at the summit. Neptuno Terrace is reminiscent of the Trevi fountain, and its surrounds are now a public park located alongside the National Library.

You then travel to the heart of the city and Plaza de Armas, the spot from where the city has grown throughout the centuries. Each Latin city has a plaza de Armas as when cities were founded the centre was also where the armoury and military base was established - hence the name Plaza de Armas (Plaza of Arms). Visit some of the more important buildings such as the Cathedral, the City Council, the Central Post Office and the National Historical Museum. Continue to the Presidential Palace, "La Moneda", the current seat of the government. You will wander the streets that were once elegant at the beginning of the 19th century and now is a commercial centre. Pass by Dieciocho Street that has been deemed as "typical" example of architecture from the period as well as the Cousino Palace built around 1870 and the Basilica de los Sacramentinos, a blatant imitation of the Sacred Heart Church of Montmartre in Paris.

Finally, reach Bernardo O'Higgins Avenue better known as "Alameda", which is the main street of the city where the tour concludes with a visit only to the San Francisco Church, located in the heart of Santiago, built between 1586 and 1628 by the Franciscan order and is the oldest colonial era building in the country.

Once all activities are completed, we will transfer you to your hotel.

Balance of the day at leisure.

O/Nite: [Hotel Cumbres Lastarria](#)

## Day 3

### Explore Valparaiso, Chile

#### [Valparaiso](#)



#### [Vina del Mar](#)



Today, we will pick you up from your hotel and take a drive to Chile's central coast, to picturesque Valparaíso, one of the first Chilean cities founded by the Spanish. The city is a historic port and university town, famous for its labyrinth hills, which are covered in quaint, colorful old houses and accessible only by a steep climb or by the city's unique system of funicular railways.

A thriving port for centuries, modern Valparaíso remains Chile's primary outlet to the sea. After years of earthquakes, gloom and decay, the historic port and university town is now living something of a revival, culminating in UNESCO naming Valparaíso's Historic Quarter a World Heritage Site in 2003. One of the highlights of the tour will surely be Chilean Nobel Prize-winning poet Pablo Neruda's residence, "La Sebastiana". The house is full to the brim with the eccentric genius' keepsakes from his many trips abroad, as well as an extensive library.

Travel to Viña del Mar, Chile's fashionable beach resort and take time to wander.

O/Nite: [Hotel Cumbres Lastarria](#)

## Day 4

### Puerto Natales

#### [Puerto Natales](#)



#### [Hotel Vendaval](#)



Today, at schedule time, we will transfer you to Santiago Airport for your flight to Puerto Natales.

Upon arrival to Puerto Natales Airport, we will meet you and transfer you to your hotel.

Check-in.

Balance of the day at leisure.

Puerto Natales is a captivating city that will take your breath away with its stunning scenery and incredible adventures. Nestled in the heart of the Chilean Patagonia, this city is the perfect starting point for any intrepid explorer looking to experience the best that nature has to offer.

With its crystal-clear waters, majestic mountains, and awe-inspiring glaciers, Puerto Natales is a feast for the senses. From hiking the world-famous Torres del Paine National Park to exploring the rugged coastline by boat, there's no shortage of adrenaline-pumping activities to be found here.

But Puerto Natales isn't just about adventure - it's also a city rich in history and culture. Take a stroll through the bustling town center, where you'll find vibrant markets selling local crafts and cuisine, or visit one of the many art galleries that showcase the region's unique heritage.

O/Nite: [Hotel Vendaval](#)

## Day 5

### Puerto Natales - Torres del Paine National Park

#### [Torres del Paine National Park](#)



#### [Mylodon Cave](#)



Today's trip will know 2 natural monuments First, the Milodon Cave, one of the most important paleontological sites in South America, consisting of three caves where remains of "milodones", extinct prehistoric large herbivorous mammals were found.

Then continue to Torres del Paine National Park, considered by specialized publications among the most beautiful on the planet.

On the way you will enjoy magnificent views of Laguna Sofia, the Cordillera Prat, Lake Porteño, among other places.

A short walk will take you to a point where you will see the Cuernos del Paine to continue to the sector of Lake Gray.

After a tasty lunch (not included in the rate), you will visit the viewpoint of Lake Nordenskiöld and then you will visit the Laguna Amarga, without first visiting the Paine Waterfall, a beautiful place where you can see the discharge of milky waters coming from the glaciers and that drain finally in the Seno of Ultima Esperanza.

After admiring the breathtaking views, you can call it a day as your transport takes you back to your hotel in Puerto Natales.

The evening is yours to do as you wish.

O/Nite: [Hotel Vendaval](#)



## Day 6

### Puerto Natales - Serano Glacier & Balmacedo Glacier

#### [Torres del Paine National Park](#)



Enjoy the best navigation through the channels of Last Hope, where you can observe flora and fauna of this wonderful place and enjoy contemplating the beautiful Balmaceda and Serrano Glaciers.

The navigation starts in Puerto Bories located 10 minutes from Puerto Natales. The cruise begins on the Señoret Channell, heading NW towards Mount Balmaceda.

Our first point of interest will be the Bories National Historic Refrigeration Monument, which was founded in 1913 by the Tierra del Fuego Exploitation Society and for more than 60 years it was the most important slaughterhouse in the area. The place is worth visiting because of its masonry construction, European style and outstanding industrial architecture.

Then we will go to Guanaco Island where sometimes it is possible to observe the small Magellan Dolphins or Toninas.

Next, we will get to the Wall of Cormorants through the Margot Farm where we will be able to admire many of these beautiful birds just gliding in the air. We will continue the trip to Punta de Lobos where it is possible to see sea lions. Then we will be able to see a waterfall and some cliffs where it is common to see condors.

At each point of interest our boats will stop so that the passengers will be able to enjoy the incredible scenery and feel the unique spirit of Patagonian nature.

The cruise continues to Mount Balmaceda (2035 meters high) where we can appreciate the Balmaceda glacier, then we will disembark in Puerto Toro to begin a one-hour round hike along the shore of the Témpanos lagoon. We will always be accompanied by our bilingual guide.

We will go through a native forest towards the Serrano glacier, where we will enjoy the imposing vegetation and the contrast between the perfectly clear sky and the ice of the sea, next to the Serrano glacier.

We will begin the return, and we will arrive at Perales Farm, where we will disembark and offer lunch, which can be grilled meats (lamb) or an alternative menu.

The arrival into the city will be at 5:00 p.m. approximately.

O/Nite: [Hotel Vendaval](#)

## Day 7

### El Calafate, Argentina

#### [El Calafate](#)



Today, at schedule time, we will transfer you to Puerto Natales Bus Station for your cross the andes journey to El Calafate.

On arrival to Calafate Bus Station, we will meet you and transfer you to your hotel.

Balance of the day at leisure.

El Calafate is a charming town situated in the southern Patagonian region of Argentina, known for its stunning natural beauty and proximity to the incredible Perito Moreno Glacier.

The town is nestled on the shores of Lake Argentino, a glacial lake that provides visitors with picturesque views of the surrounding Andes Mountains. The streets of El Calafate are lined with cozy cafes, shops selling local handicrafts, and restaurants serving up traditional Argentine cuisine.

O/Nite: [Hotel Kosten Aike](#)

## Day 8

### El Calafate - Perito Moreno Glacier

#### [Perito Moreno Glacier](#)



#### [Hotel Kosten Aike](#)



An early start takes you to one of the largest and the only advancing glacier in the world, as well as the biggest attraction at Los Glaciares National Park, a 600,000-hectare protected area covered by an ice mantle. We will start by penetrating the Patagonic Andean forest and make a first breath-taking stop at "Curva de los Suspiros" (Curve of Sighs), where we will enjoy a first view of this incredible natural wonder. When we approach the glacier, we will walk down the catwalks to approach the Glacier and admire from different panoramic points this wonderful creation of Mother Nature.

If luck is with you, you will see parts of the wall of ice "calve" off and fall into the lake. The Perito Moreno Glacier is an enormous glacier located in the Los Glaciares National Park. It is one of the most important tourist attractions in Argentina due to its size and accessibility. It is less than two hours by bus from El Calafate while viewing platforms and trails make the visit and the observation easy and pleasant.

Los Glaciares was declared a UNESCO world heritage site in 1981 and since then the glacier has only increased in popularity, regularly making the news when another ice bridge forms and collapses. The glacier is also part of the Southern Patagonian ice field, which is the third largest frozen body of fresh water in the world. This day will be an unforgettable experience, a once in a lifetime delight.

Part of the adventure will include a short cruise near the face of the glacier. This tour departs daily from Puerto Moreno, by the National Park's trails at the Iceberg's Channel. From that point, the tour boat navigates close - but not too close - to the glacier's North wall where you can admire its size.

Once all activities are complete, we will return to Calafate.

Balance of the day at leisure.

O/Nite: [Hotel Kosten Aike](#)

## Day 9

### Ushuaia

#### [Hotel Albatros Ushuaia](#)



This morning, at schedule time, we will transfer you to the airport for your flight to Ushuaia.

Welcome to Ushuaia.

Acknowledged as the southernmost city in the world, Ushuaia was founded in 1884 and was one of the original points of encounter between the Yamana and Anglican cultures. Its name derives from the Yamana word for 'penetrating bay' and it's surrounded by the last high peaks of the Andes. Today, it is one of the largest cities on Tierra del Fuego Island, with around 65,000 inhabitants.

Upon arrival, we will meet you and we will transfer you to your hotel.

Balance of the day at leisure.

O/Nite: [Hotel Albatros Ushuaia](#)

## Day 10

### Ushuaia - Tierra del Fuego National Park

#### [Ushuaia](#)



#### [Tierra del Fuego National Park](#)



This morning, enjoy a tour around one of the most important protected areas in the country and the only one by the seashore.

We will set off from the city center, heading southwest, traveling through coastal landscapes and, after watching the glacier valleys, we will stop at the Fuegian Southern Railway station, where passengers can choose to enter the Park on board the famous 'End of the World Train' (ticket not included).

As soon as the passengers reach the Park, the tour around the different interest points gets started. At Bahía Ensenada, the 'Concheros Antropogénicos' (rests of mollusks and ashes today covered with vegetation), which are evidence of the native settlements in the area around 6500 years ago, can be appreciated.

Then we head Roca Lake where we can see the geography of 'Isla Grande de Tierra del Fuego' which has a sister city relationship with the Chilean Republic.

After walking along the park, we will get some free time to rest and recover our strength, tasting some chocolate or coffee in "Casita Del Bosque" by the Lapataia River.

From there, by bus or van, we will head the end of National Route No 3, in Lapataia Bay, then, we will go back to the city and transfer you to your hotel.

O/Nite: [Hotel Albatros Ushuaia](#)

## Day 11

### Ventus Australis Cruise

#### [Beagle Channel](#)



Today, between 10:00 AM and 5:00 PM, we will check-in at Avenida San Martín 409, next to the pier, to embark at 6:00 PM.

After boarding, we will make a welcome toast and introduce the captain and his crew.

The ship will sail to the far south immediately after.

Through the mythical Beagle Channel and the Strait of Magellan, we will travel through Patagonia and the channels of Tierra del Fuego.

O/Nite: [Ventus Australis Cruise](#)

## Day 12

### Ventus Australis Cruise

#### [Cape Horn](#) - [Wulaia Bay](#)



We will sail through the Murray Channel and Nassau Bay, arriving at Cape Horn National Park, where we will disembark, if weather conditions permit, to experience the magic of walking through one of the southernmost points of the world, surrounded by charm and legends.

In the afternoon, we will disembark at Wulaia Bay, a historic site of one of the largest settlements of the native Yagans canoeists. We will reach a viewpoint, walking through the Magellanic forest in which lengas, coigües, canelos, and ferns grow, among other species.

O/Nite: [Ventus Australis Cruise](#)

## Day 13

### Ventus Australis Cruise

#### [Pia Glacier](#) - [Porter Glacier](#)



In the morning, we will sail along the northwest arm of the Beagle Channel to enter and disembark in the Pia Fjord. We will make a trip to the viewpoint from where you will see the homonymous glacier, whose main peak extends from the top of the mountain range to the sea. During the afternoon, in our Zodiac boats, we will navigate between high rocky walls until reaching the Porter Glacier.

O/Nite: [Ventus Australis Cruise](#)

## Day 14

### Ventus Australis Cruise

#### [Agostini Sound, Eagle & Condor Glaciers](#)



#### [Venus Australis Cruise](#)



In the morning, we will navigate the Cockburn Channel to enter the Agostini Sound, where you can appreciate the glaciers that descend from the center of the Darwin Mountain Range, some of them reaching the sea. During the morning, we will disembark in Zodiac boats for a walk around a lagoon formed by the melting of the Aguila Glacier. In the afternoon, we will navigate in Zodiac boats to approach the Condor Glacier. We will learn about the formation of glaciers and their influence on the abrupt geography of the Fuegian channels.

#### Tierra del Fuego National Park

The world-famous Tierra del Fuego National Park is situated on the Argentine part of the island of Tierra del Fuego and was the first shoreline national park established in Argentina. The park is famous for its sublime views, fascinating history and unique environment. Featuring bright turquoise fjords, green forests close to the coast, and lush valleys created by parallel mountain ranges, the stunning scenery offers breathtaking views and extraordinary photographic opportunities, especially from the renowned lookout point at Lapataia Bay. History enthusiasts can see the 'concheros', circles where mollusks accumulated, showing that there were ancient yamanas aboriginal tribes living in the area hundreds of years ago (their main food was seafood). The remarkable Canadian Beavers can be seen from a distance along with their incredible dam systems, which have played a significant role in the environment.

O/Nite: [Ventus Australis Cruise](#)

## Day 15

### Ventus Australis Cruise

#### [Magdalena Island](#) – [Punta Arenas](#)



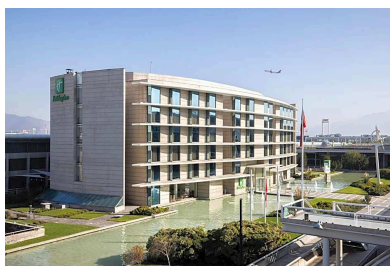
We will disembark at Magdalena Island first thing in the morning if weather conditions are suitable. On the island, we will be able to see a huge colony of Magellanic penguins. This excursion is replaced by a landing on Marta Island in September and April, where South American sea lions can be sighted from Zodiac boats. Then, we will arrive in Punta Arenas, disembarking at approximately 11:30 hrs.

Upon disembarkation, **arrange from the cruise concierge a transfer to Punta Arenas Airport.**

Check-in for your flight back to Santiago

On arrival to Santiago International Airport, **make your own way to your hotel, located next to the arrival terminal.** Check-in. Balance of the evening at leisure.

O/Nite: [Holiday Inn Santiago](#)



Day 16

Tour ends after breakfast

[About South America Tours](#)



**Thanks to [South America Tours](#) for creating this exceptional Patagonian adventure tour & [Australis Patagonia Cruises](#) for an unforgettable exploration of the Fjords 'At the End of the World'.**

---

### **Trip Highlights:**

- Santiago - explore Chile's cosmopolitan capital
- Torres del Paine stay at one of the best located lodges within the national park, discover the spectacular giant vertical towers of the Paine massif and explore by boat and on foot
- El Calafate – explore the thriving tourist resort southern shore of Lago Argentino
- Los Glaciers National Park - marvel at the spectacular Perito Moreno Glacier
- Ushuaia - capital of Tierra del Fuego - commonly regarded as the southernmost city in the world.
- Cruise along Chilean Fjords & Cape Horn

### **Further Reading:**

**Patagonia Explorers:** [Patagonia and other adventure travel destinations](#)

**Ushuaia:** [Why this 'town at the end of the world' should be on your bucket list](#)

**Birds of Patagonia:** [Where and when to observe the Andean condor in Patagonia?](#)

**Flora of Patagonia:** [Rare Patagonia Flowers to Look Out For in the Region](#)